

SUSTAINABLE NEIGHBOURHOODS

RECONSTRUCTING CONSTRUCTION FOR GOOD



Litobox® archipelago



www.buildupoffsite.com
hello@buildupoffsite.com
0032 16 15 12 10



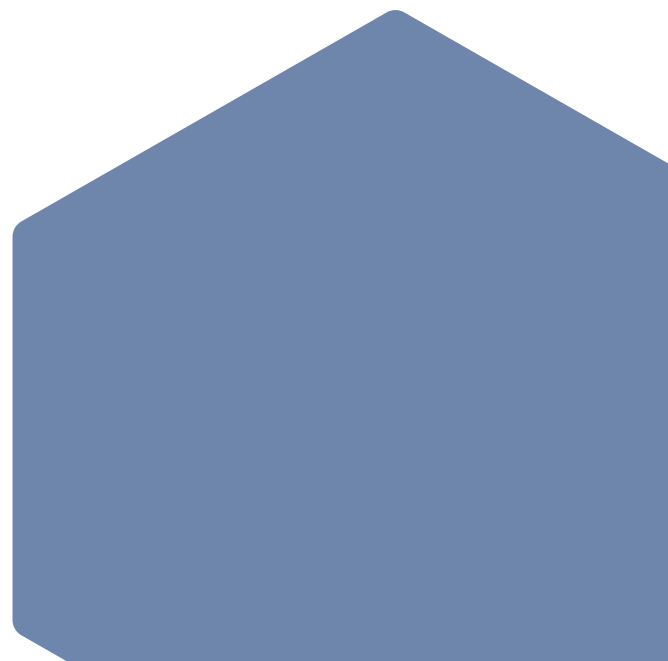


**A home is the foundation
for a balanced life for every citizen.**

01 HOUSING CRISIS

In dire need of quality housing

- The lack of (affordable) housing is a problem. Partly because the building sector is under great pressure.
- The building sector is facing labour shortages. Especially of low skilled workers in construction.
- We have to be considered of the available space that rests us, let's use it wisely.
- We need to build energy-efficiently both in existing houses and in new ones. Operational energy & embodied carbon challenges
- Use of materials. Our resources are exhaustible, so let's build in a circular way!
- Speed of construction: the waiting lists for social housing are now an even greater challenge due to the need for additional sheltered housing





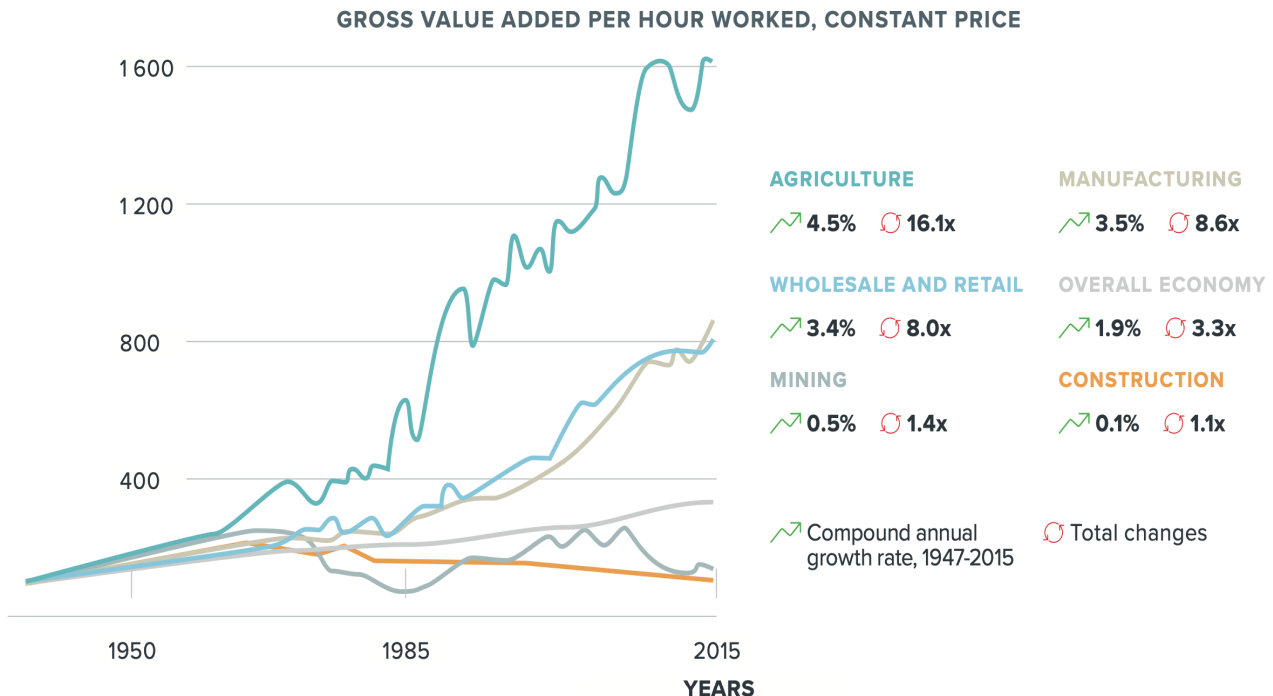
CURRENT SOCIAL HOUSES [2020]

PEOPLE WAITING ON SOCIAL HOUSING

170.000

**ESTIMATED UKRAINIAN REFUGEES IN
SEARCH OF A HOME**

02 OFFSITE CONSTRUCTION



Labour productivity in construction has been declining since 1968, in contrast to rising productivity in other sectors.

50%
LESS
MATERIAL



60%
FASTER

Building a better tomorrow start today.

Sustainability is our core belief. The foundation we build on. It's why we produce in one place, reducing waste and transport. And why we work with materials that make a difference, not an impact. Better for the planet, for you, your kids and their kid's kids.

If you can imagine it, we can make it.

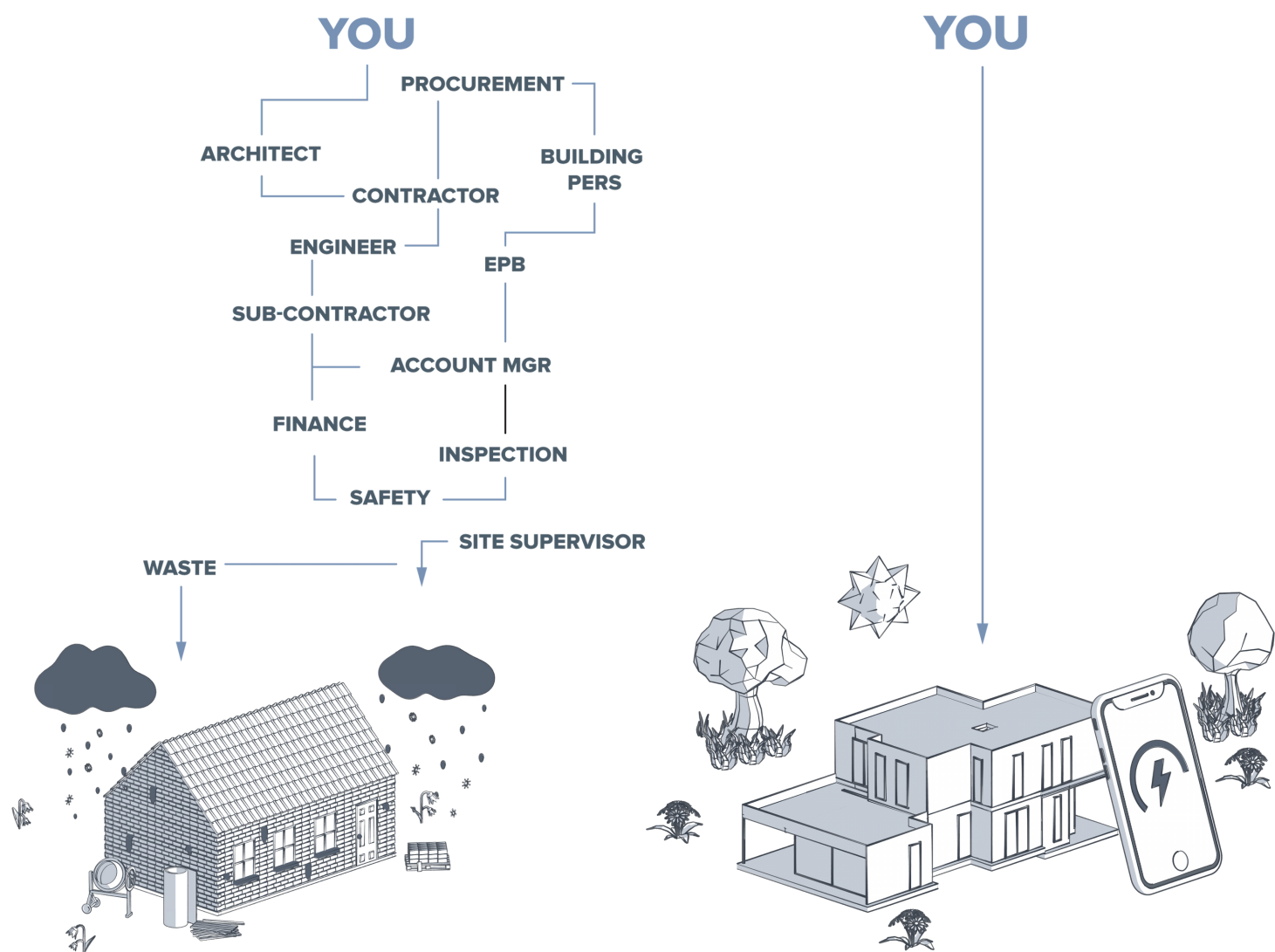
If you think offsite construction might put limitations on creative possibilities, think again. Because our systems offer unlimited creativity, with the added bonus of ultimate quality. The only thing we don't build are castles in the sky. Not Yet.

Reconstructing construction for good.

Technology has changed our world. Disrupting every aspect of our lives. Except one. At BuildUp we rethink the way we building in Europe. For a better and more sustainable planet. In an industry that stood still for ages, the only way is up.

**WE ARE COMMITTED TO BUILD
CARBON NEGATIVE HOUSES IN ONE DAY,
IN ONE CLICK WITH LIFETIME GUARANTEE.**

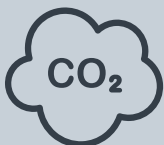
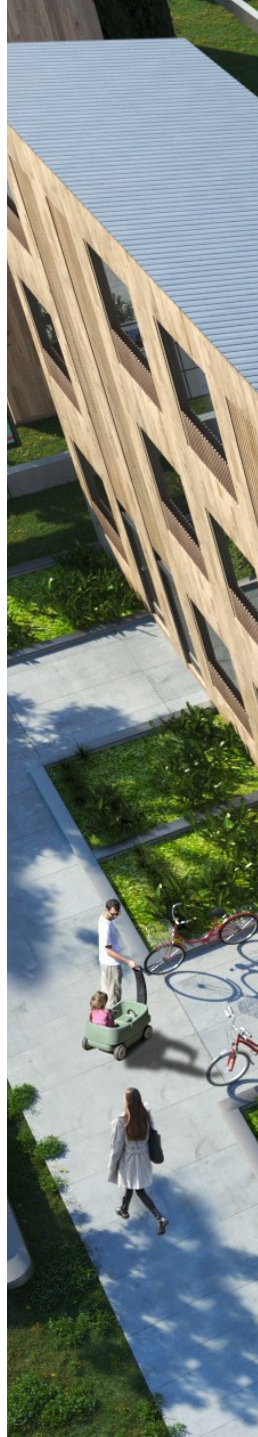
ONE HOUSE IN ONE DAY.



03 **SUSTAINABLE NEIGHBOURHOOD**

Building the future with offsite construction.

"We're proud to be the game-changers. Introducing offsite construction for untold speed and reliability. With state-of-the-art materials and a talented team. Using digitalization to bring flawless precision to every design."



Striving for carbon negative buildings



Increased use of bio-based materials



Zero waste on site



Fully recyclable



60% faster than traditional construction methods



Reducing CO2 emissions



Highest acoustic and thermal comfort



Increased quality of buildings

04 THE HOUSE AS OUR PRODUCT

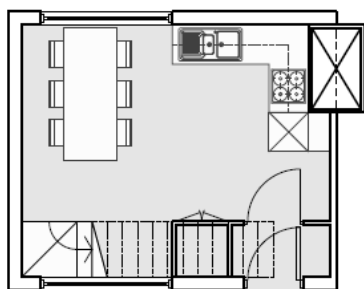
Housing, apartments, energetic renovation.

BuildUp constructions are ideal for any type of project. From new construction to renovation, and from small, detailed to large projects.

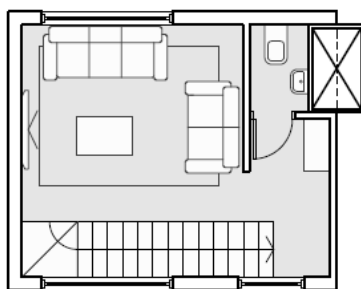
TYPE A - 64 m²

2 people

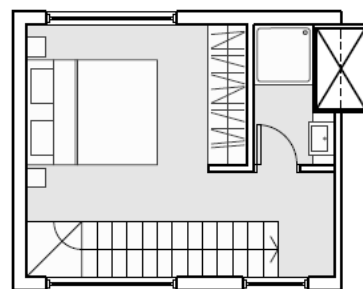
1 bedroom



0



+1

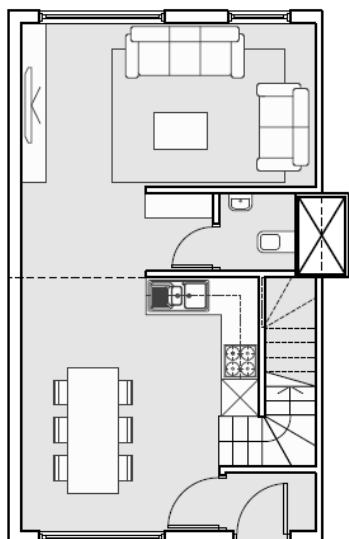


+2

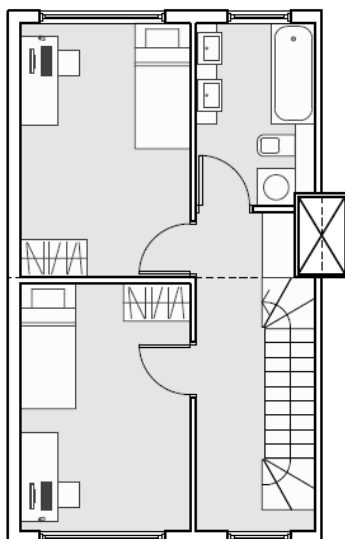
TYPE B - 128 m²

5 people

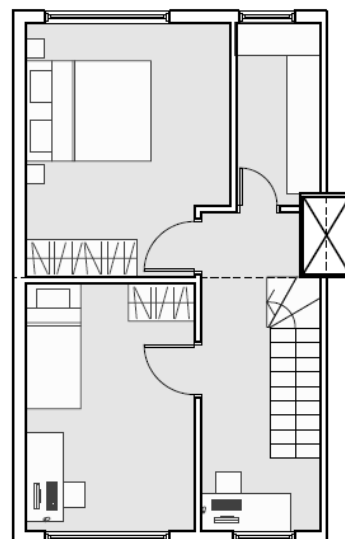
4 bedrooms



0



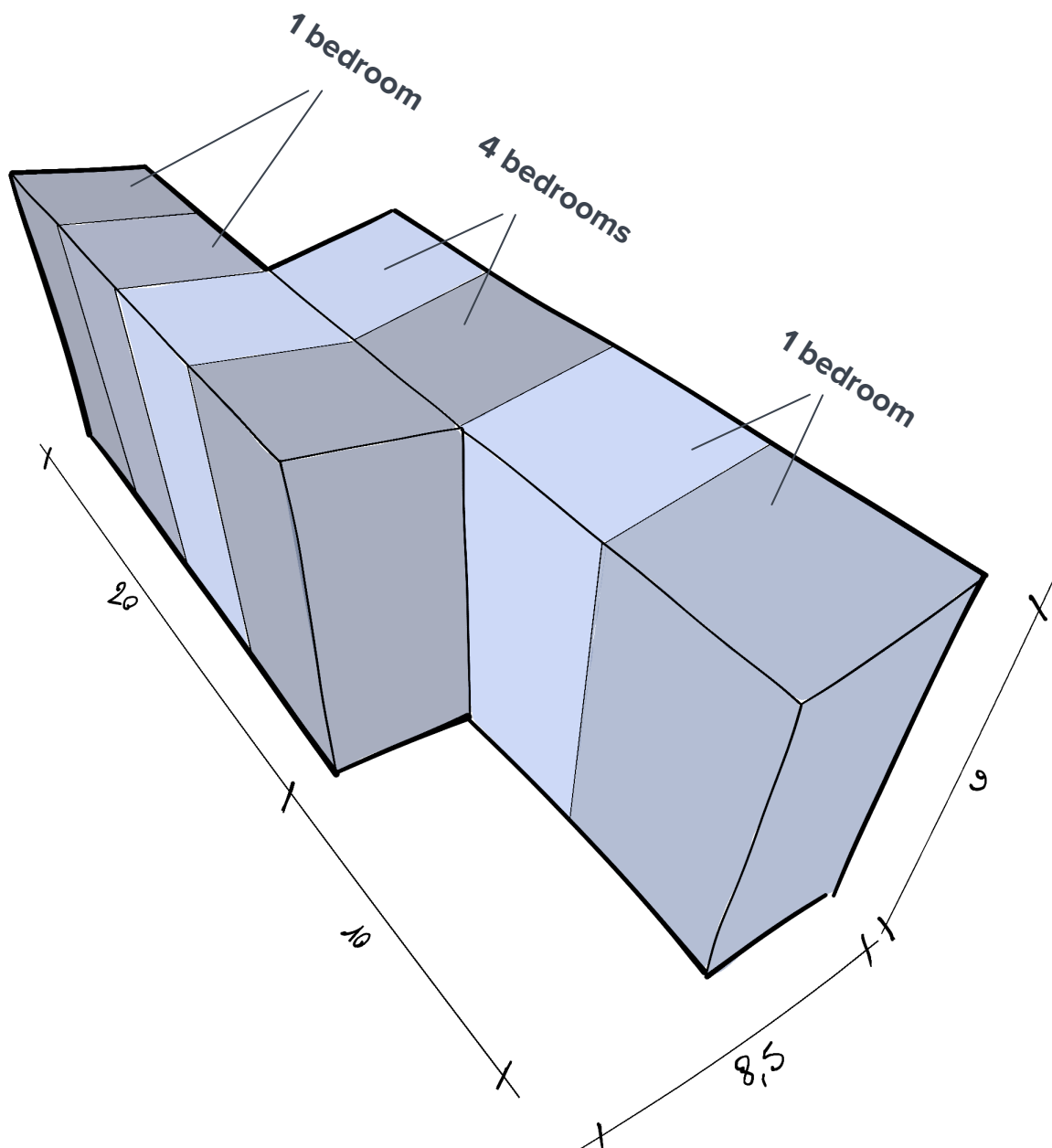
+1



+2

A new neighbourhood in one week

- ☒ 6 houses
- ☒ 6 families/ 18 people
- ☒ Footprint 170 m²
- ☒ Floor area 510 m²
- ☒ Volume 1530 m³



05 **TECHNICAL PROPERTIES**

REQUIREMENTS



Accoustics



Fire safety



Building physics

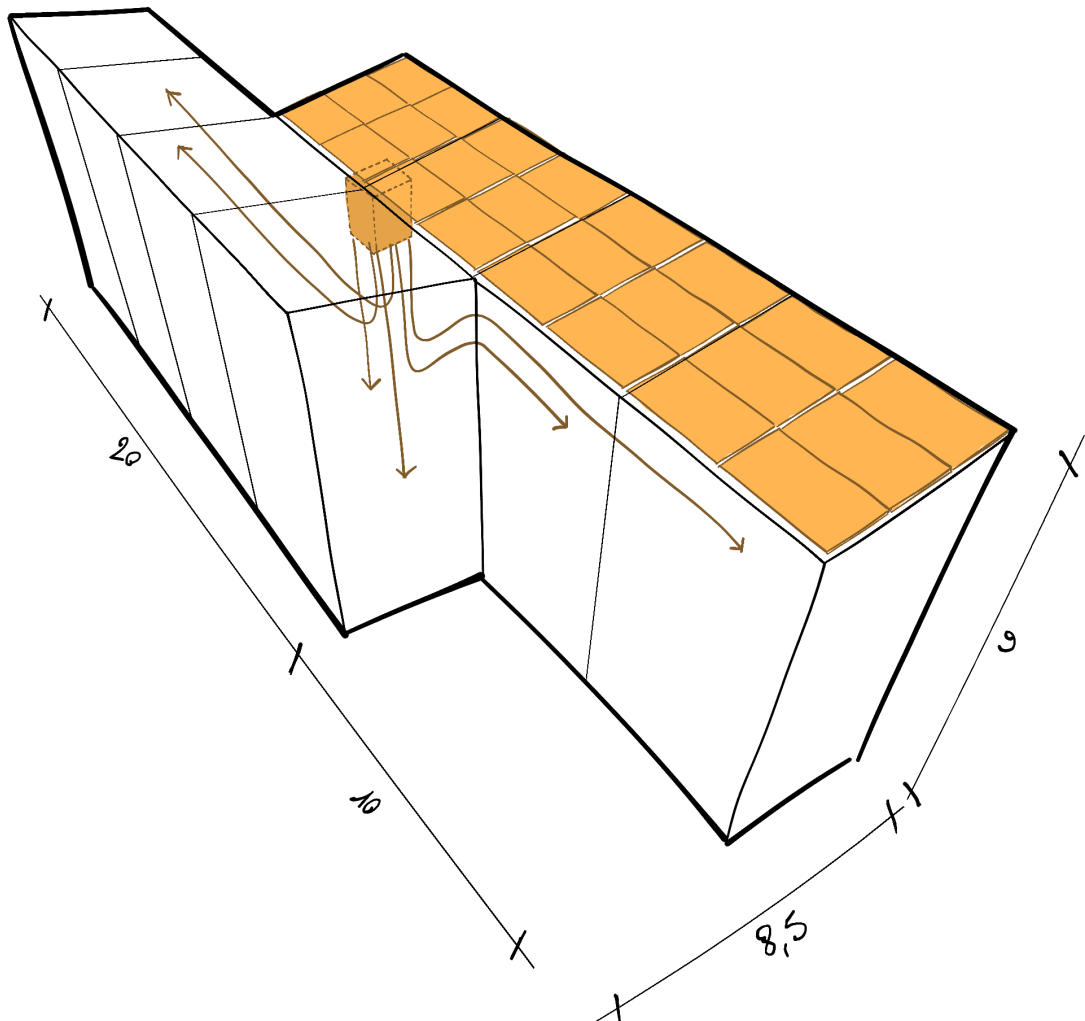


Thermal & energy

THINK INSIDE THE BOX!



- ✓ 1 collective installation
- ✓ Easy in maintenance
- ✓ Lowest TCO
- ✓ Zero Energy
- ✓ Digital data platform

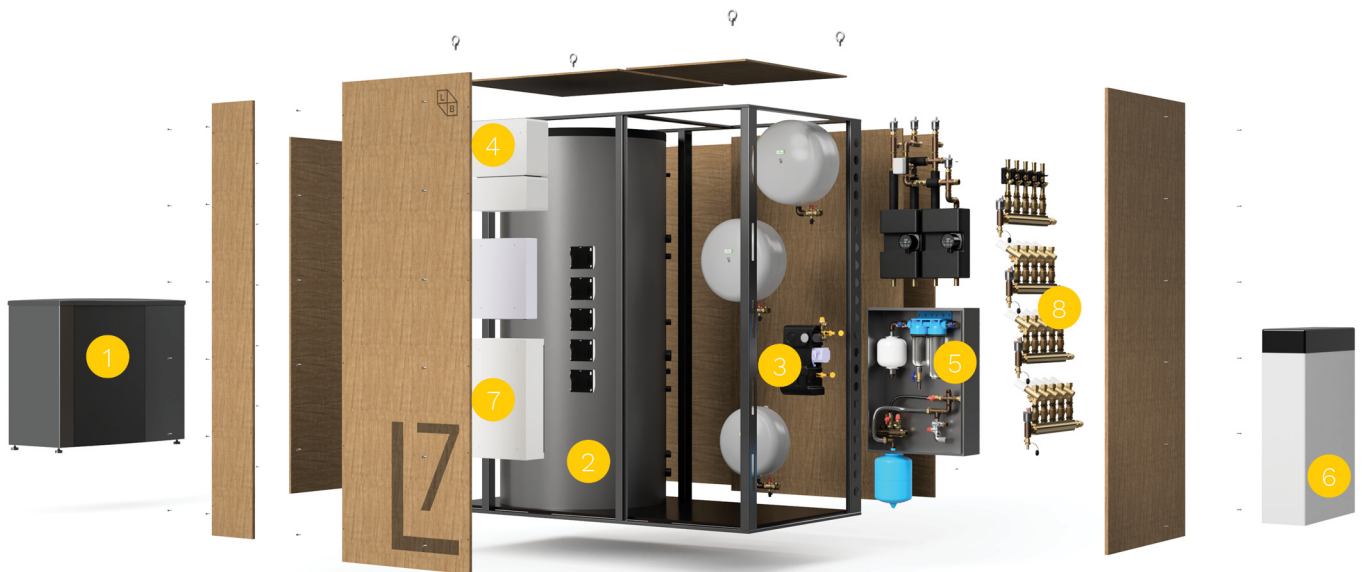


THINK INSIDE THE BOX!

At LITO, we share a passion for renewable energy and modular construction. Our Litobox® is the result!

The Litobox® is a plug-and-play solution that combines a heat pump, ventilation system, solar PV, battery storage, electrical and internet equipment and even a solar thermal and rainwater filtration system in one unit.

From a starter studio to a luxurious villa of 500 m²: there is a Litobox® for every home!



- 1 The heat pump in your Litobox® has an SPF (Seasonal Performance Factor) of more than 4!
- 2 A 1000l LITO hygienic multi energy storage tank delivers sufficient sanitary hot water for up to 6 houses.
- 3 A solar thermal system saves energy and considerably increases the lifespan of your heat pump.
- 4 A perfectly dimensioned solar PV installation will provide you with the cleanest energy and the lowest TCO.
- 5 A rainwater filtration system saves up to 50% on cost for sanitary water.
- 6 An optional battery pack reduces your monthly energy costs even further by raising the level of self-consumption.
- 7 To save time and avoid mistakes on site, all technologies are already perfectly connected and labelled in the well-organised electrical switchboard.
- 8 Even a balanced distribution system with digital data platform to monitor the energy consumption of every user and the performance of every component is integrated!



STRONG

Every component in the Litobox® is thought out. By optimizing the hydraulics and electrical equipment, we eliminated unnecessary parts, saved space and lowered the running and maintenance costs.

FAST

The Litobox® L7 can be transported by a standard truck. Preferably, the Litobox® is placed with a crane in minutes. The outer dimensions also allow the box to be brought in through a standard doorway.



EASY

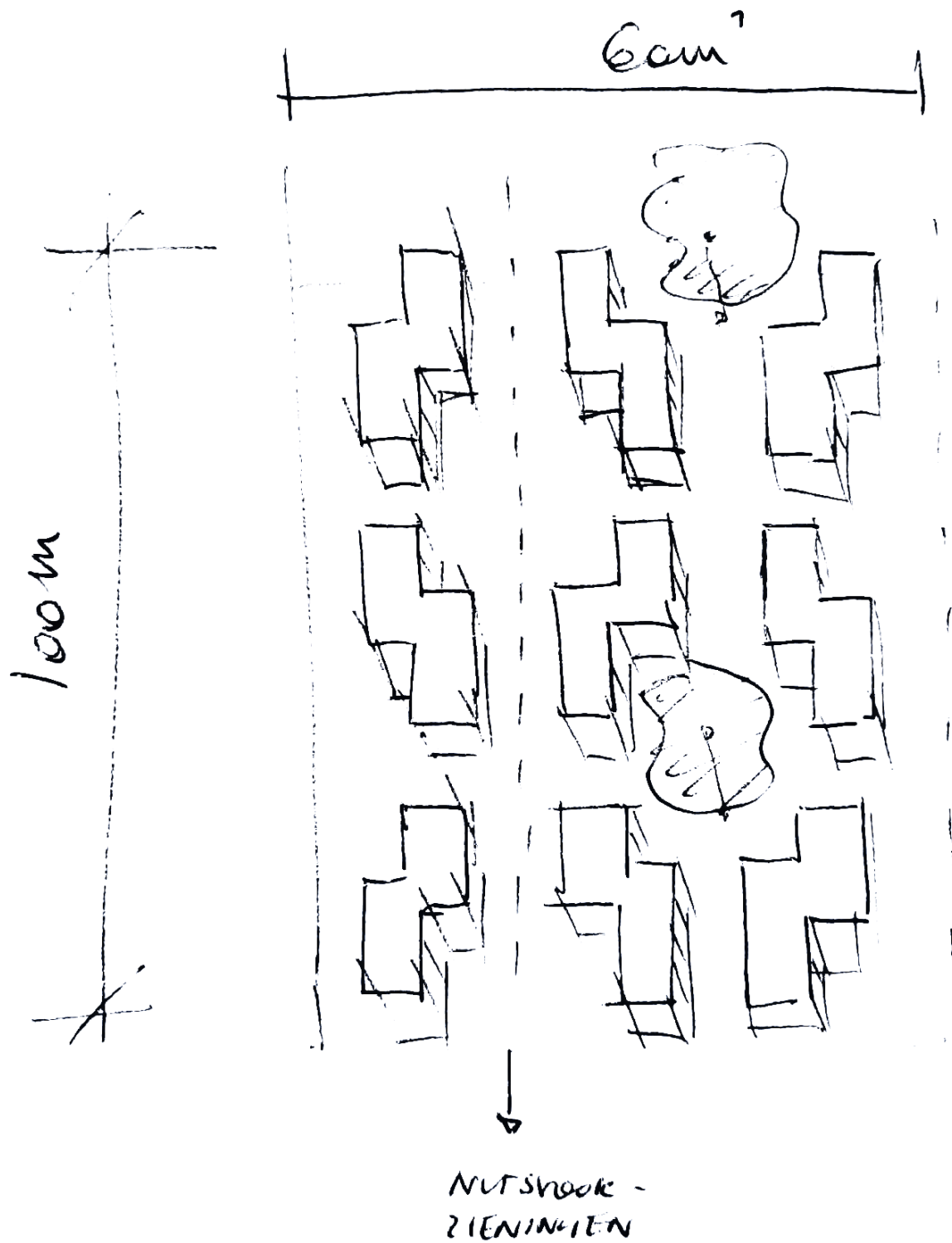
By using plug-and-play connections a Litobox® can be placed, installed and commissioned in less than one hour.

EFFICIENT

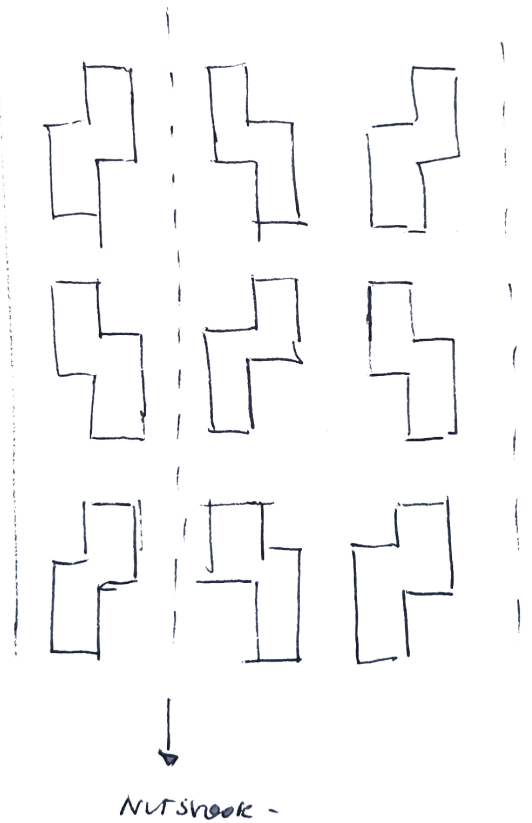
A Litobox® converts every well insulated building into a zero-energy house. The real life performances will be monitored with every other Litobox® on the LITO Data Platform. This guarantees the lowest TCO!



06 SUSTAINABLE NEIGHBOURHOOD



- ✓ 1 football field - 64 x 100m
- ✓ 54 houses
- ✓ Total footprint = 1530 m²
- ✓ 24% built
- ✓ $V/T = 0.7$





3D SPACES

OFFSITE SOLUTIONS FOR
NEW CONSTRUCTIONS







The 4 values we hold in our hearts



Impact



Respect



Excellence



Partnership